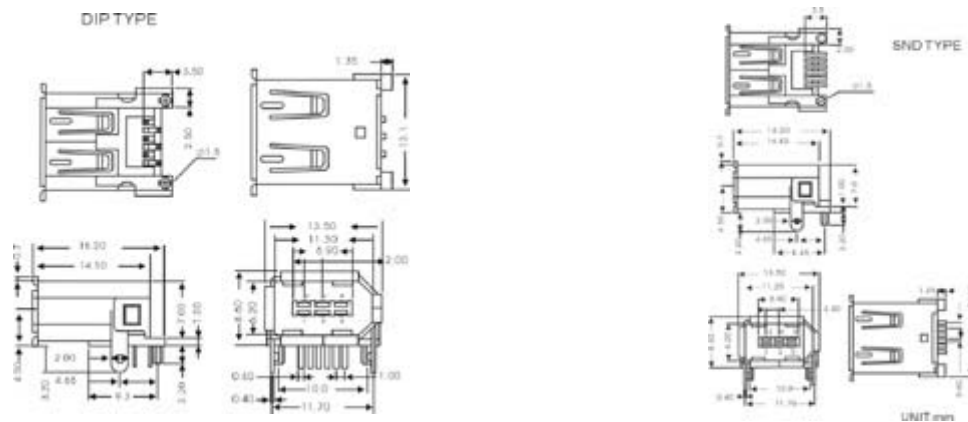


## DS1101 SERIES & DS 1102 SERIES



### SPECIFICATION

- ◆Contact Resistance:2mΩ max
- ◆Insulator Resistance:1000mΩmin.at DC 500V
- ◆Rated Current:2AMP
- ◆Rated Voltage:30V AC
- DIELECTRIC With standing
- ◆Voltage:AC 500V For 1minute
- ◆Contact:Copper Alloy
- ◆Housing:Thermoplastic(UL94V-0)



### Ordering infomation

Series No.	COLOR OF HOUSING	PLATING	GOLD PLATING
Ds1101&Ds1102	W	N	03
	W:WHITE K:BLACK	N:NI T:TIN-LEAD	03:AU3 μ" 30:AU30 μ"