

DS1107 SERIES



ELECTRICAL CHARACTERISTICS

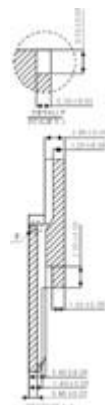
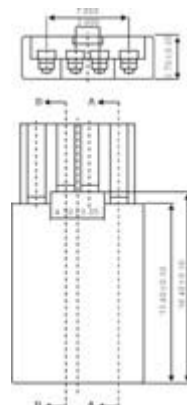
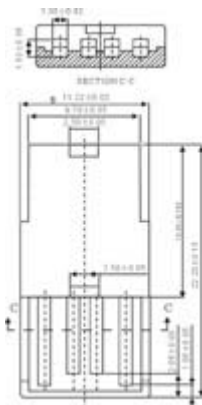
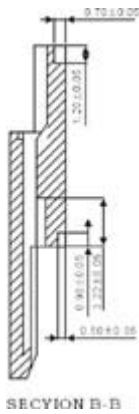
- ◆ Contact Current Rating: 1A MPERES.
- ◆ Dielectric Withstanding Voltage: AC 500VR.M.S.
- ◆ Insulation Resistance: 500 MEGOHMS MIN AT DC 500V
- ◆ Contact Resistance: 30 MILLIOHM MAXIMUM.
- ◆ Operating Temperature: -55 °C TO +105 °C

MECHANICAL CHARACTERISTICS

- ◆ Contact Insertion Force: 3.7KG MAXIMUM.
- ◆ Contact Separation Force: 1.2 KG MINIMUM.

MATERIAL

- ◆ Contact: BRASS.
- ◆ Insulator: P.B.T. UL 94-VORATED.
- ◆ Shell: COLD ROLLED STEEL .



Ordering infomation

Series No.
Ds1107

COLOR OF HOUSING
W
P: GOLD PLATED
F: GOLD FLASHED
1U" 、 3U" 、 5U" 、 10U" 、 15U" 、 30U"

SHELL
N
T: TIN
N: NICKEL
G: GOLD PLATED

GOLOR OF HOUSING
W
W: WHITE
K: BLACK